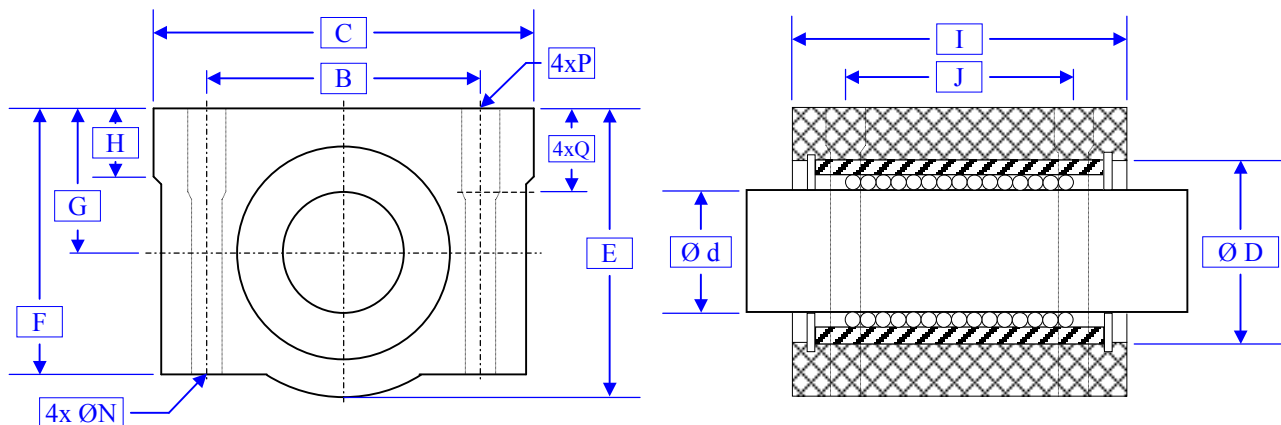


### Komplete lagers / Shaft bearings complete / Komplete Lagerungen



( mm )													
TYPE	d	E	C	I	G	F	B	J	N	P	Q	H	D
ALC-12	12	29	42	36	15	25	30.5	26	4	M5	12	8	21
ALC-16	16	38.5	50	44	19	35	36	34	4	M5	12	9	28
ALC-20	20	42	54	50	21	36	40	40	5	M6	12	11	32
ALC-25	25	51.5	76	67	26	41	54	50	6	M8	18	12	40
ALC-30	30	59.5	78	72	30	49	58	58	6	M8	18	15	45