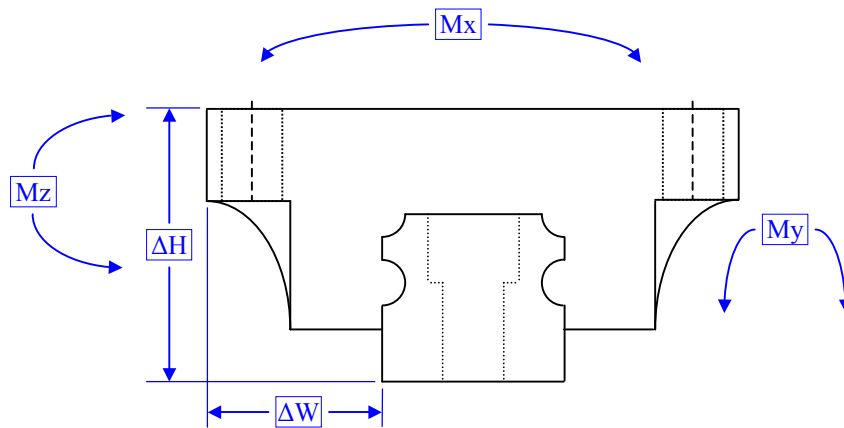
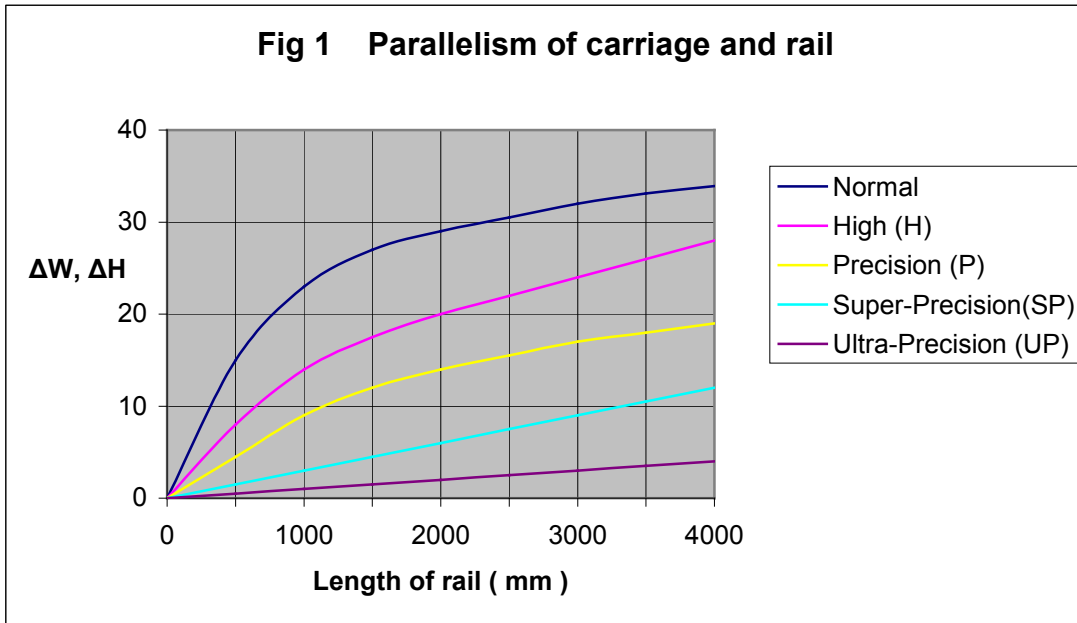


Fig 1 Parallelism of carriage and rail



Item	Grade				
	Normal	High	Precision	Super-Precision	Ultra-Precision
Tolerance of height (mm)	± 0.1	± 0.04	0 -0.04	0 -0.02	0 -0.01
Tolerance of width (mm)	± 0.1	± 0.04	0 -0.04	0 -0.02	0 -0.01
Difference of height (mm)	0.03	0.02	0.01	0.005	0.003
Difference of width (mm)	0.03	0.02	0.01	0.005	0.003
Parallelism of height (mm)	ΔH (Refer to Fig 1)				
Parallelism of width (mm)	ΔW (Refer to Fig 1)				

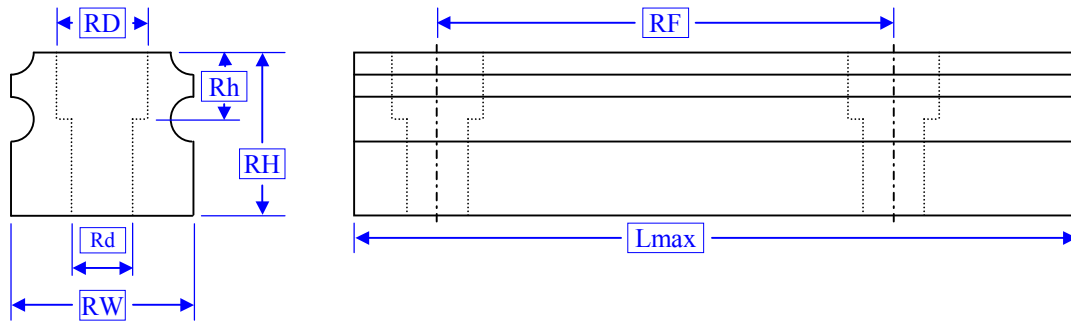
Type	Load (N)		Static Moment (Nm)		Weight (Kg)	
	C	C0	M_x	M_y / M_z	Carriage	Rail
15	8500	16500	100	80	0.21	1.4
20	14500	25600	220	180	0.4	2.6
25	21400	40000	360	310	0.57	3.6
30	29800	54900	600	490	1.1	5.2
35	39600	70100	960	730	1.6	7.2
45	67400	121000	2160	1680	2.7	12.3

C0 = Static load
C = Dynamic load

Preload

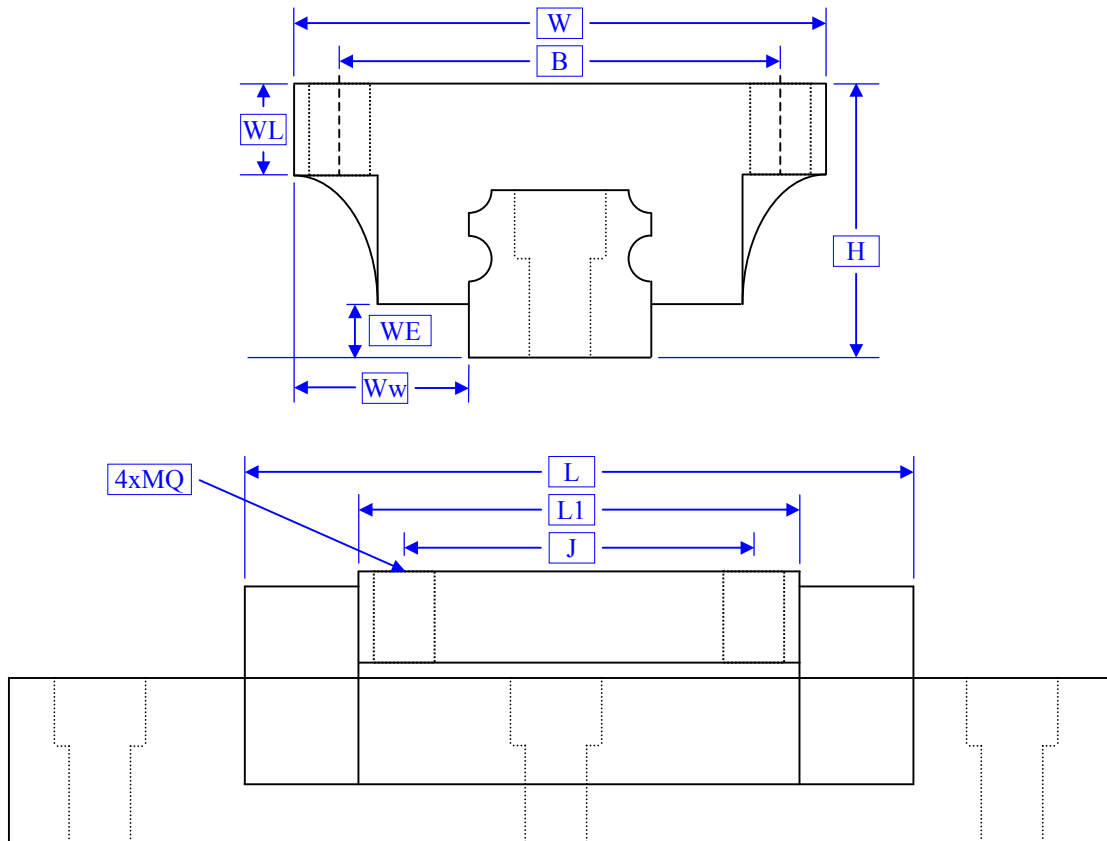
ZF – Clearance
N – No preload
Z1 – 0.02 C
Z2 – 0.05 C
Z3 – 0.07 C

Rails / Rail / Schienen



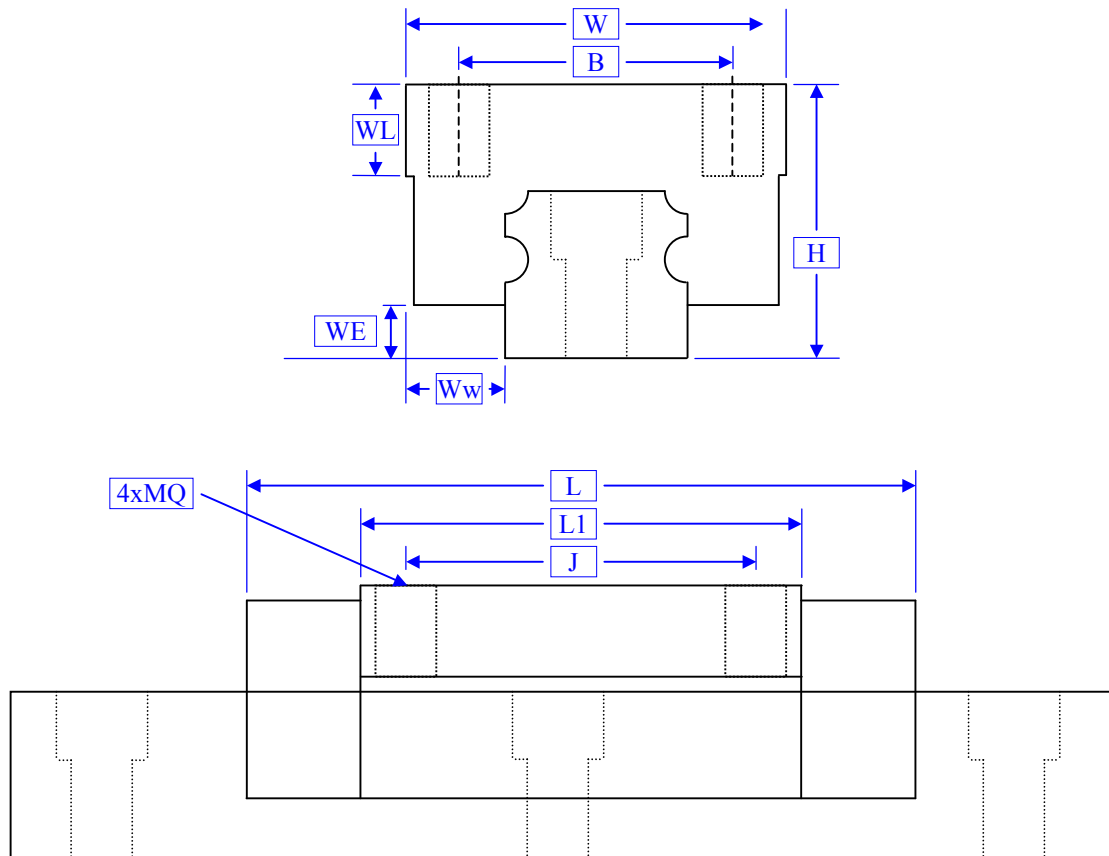
RAIL (mm)								
Model	RW	RH		Ø RD	Ø Rd	Rh	RF	Lmax
R15	15	14		7.5	4.5	5.3	60	4000
R20	20	18		9.5	6	8.5	60	4000
R25	23	22		11	7	9	60	4000
R30	28	26		14	9	12	80	4000
R35	34	29		14	9	12	80	4000
R45	45	38		20	14	17	105	4000

Wagen met flens / Carriage with flange / Führungswagen normal



Wagen (mm)										
Model	W	H	B	J	MQ	WL	WE	Ww	L	LI
15 A	47	24	38	30	M5	8	4.6	16	66	40
20 A	63	30	53	40	M6	9	5	21.5	77.8	48.8
25 A	70	36	57	45	M8	12	7	23.5	88	57
30 A	90	42	72	52	M10	12	9	31	109	72
35 A	100	48	82	62	M10	13	9.5	33	109	80
45 A	120	60	100	80	M12	15	14	37.5	138.2	105

Wagen smal / Carriage small / Wagen schmal



Wagen zonder flens (mm)										
Model	W	H	B	J	MQ	WL	WE	Ww	L	L1
15 B	34	28	26	26	M4	6.4	4.6	9.5	66	40
20 B	44	30	32	36	M5	8	5	12	77.8	48.8
25 B	48	40	35	35	M6	9.6	7	12.5	88	57
30 B	60	45	40	40	M8	12.8	9	16	109	72
35 B	70	55	50	50	M8	12.8	9.5	18	109	80
45 B	86	70	60	60	M10	16	14	20.5	138.2	105